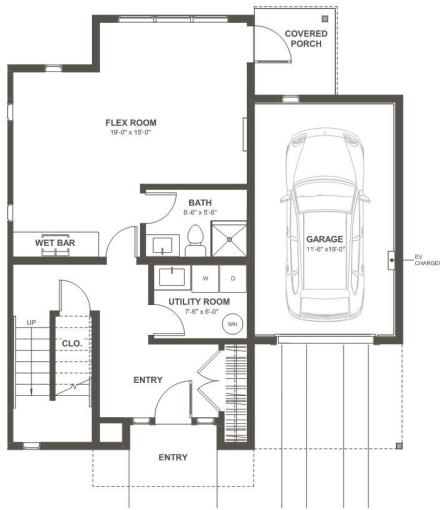




2224

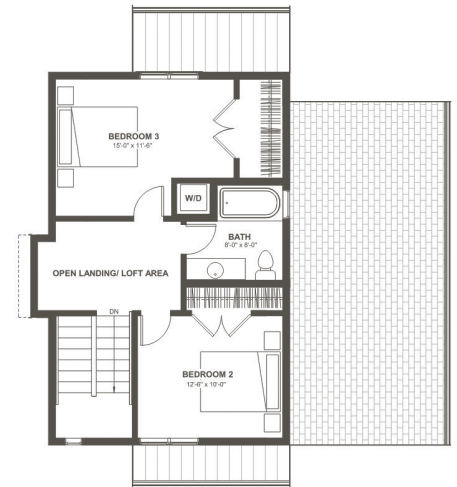
NE 125th Street, Seattle WA 98125



MAIN LEVEL



SECOND LEVEL



THIRD LEVEL

4 BEDROOMS / 3 BATHROOMS / 2,084 SQFT

- Main-level flex room with kitchenette, polished concrete floors, private entry & patio
- Built-in cabinet in main living space
- Open kitchen with vaulted ceiling & sliding door to covered deck
- Oversized third-level landing/loft area
- Attached EV-ready 1-car garage



[LiveAtThorntonCreekCommons.com](https://www.LiveAtThorntonCreekCommons.com)

VALERIE HWANG

206-778-4470

valhwang@windermere.com

Windermere Real Estate Co. / Seattle-Sand Point

PAMELA JENSEN

206-841-0050

pamelajensen@windermere.com

Windermere Real Estate Co. / Seattle-Wedgwood

